

**Stainless Standard Drain Channel**

Standard Drain Channels are manufactured from 304 or 316 Grade stainless steel in standard lengths of 3 meters and 3 standard widths.

Our Drain Channels are designed to be robust and to be used in hygienic environments that have heavy load traffic. Our simple design provides an easy to clean surface and a 6mm slope for every 1 meter for draining.

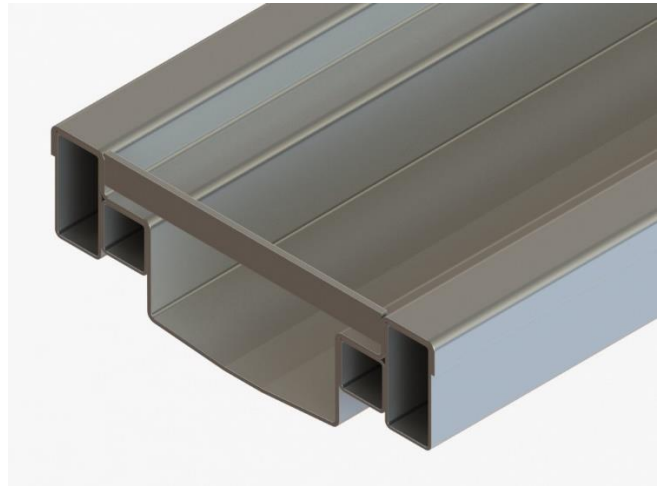
Please take a look at our Flanged Gaskets & Bolted Joints to add on to your drain channel.

Standard Channel Sizes:




- 100mm
- 170mm
- 300mm

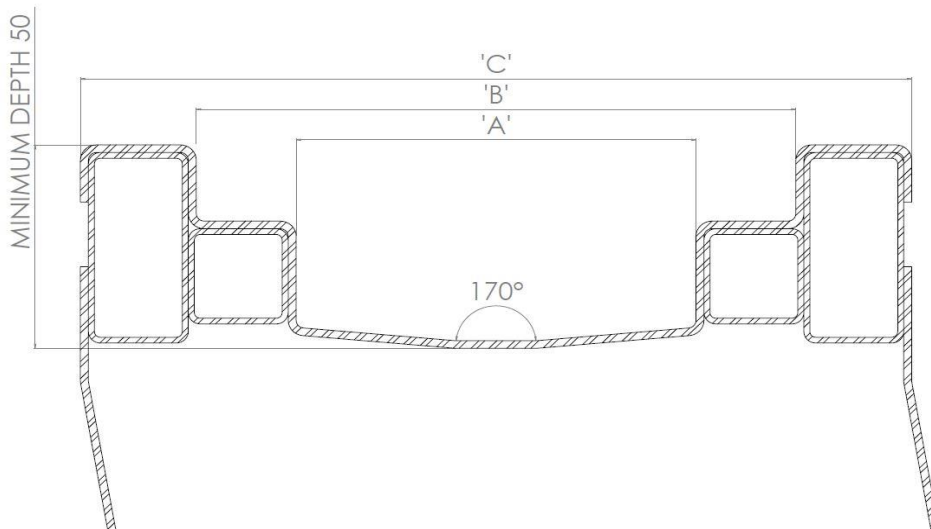
Technical Data:

- 2mm thick Stainless Steel
- Cell bars welded at 1-meter intervals
- Sand Blast Finish
- Supplied in 3-meter lengths
- Available in 3 widths



Standard Drain Channels LS-DC are designed for use with our Drain covers, Drain Outlets, Drain Gullies and Rodding Eyes.

Product	SKU	A	B	C	Cut Out Dims Width	Cut Out Dims Depth	Min Fall	Load Class
Standard Drain Channel 100mm	LS-DC-100	100	150	208	410	Channel Depth + 100mm	1:150	
Standard Drain Channel 170mm	LS-DC-170	170	220	278	480	Channel Depth + 100mm	1:150	
Standard Drain Channel 300mm	LS-DC-300	300	350	408	608	Channel Depth + 100mm	1:150	



**LS**engineering

concept | design | manufacture | install

**ADVECTO.CO.UK**

SPECIALISTS IN HYGIENIC STAINLESS STEEL EQUIPMENT

