

Stainless Shower Drain Channel

Shower Drain Channels are manufactured from 304 or 316 Grade stainless steel in standard lengths of 3 meters and 1 standard widths.

Our Shower Drain Channels are designed to be robust and to be used in hygienic environments that have light pedestrian traffic. Our simple design provides an easy to clean surface and a 6mm slope for every 1 meter for draining.

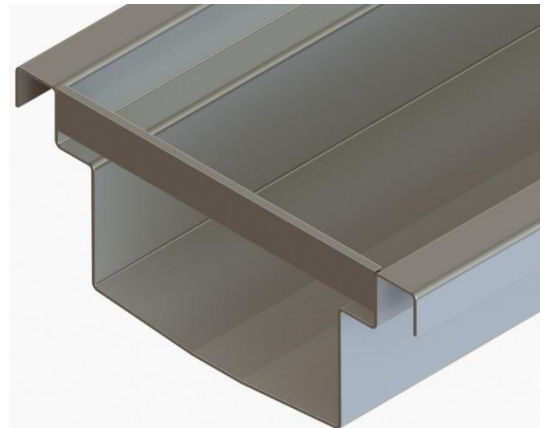
Please take a look at our Flanged Gaskets & Bolted Joints to add on to your drain channel.

Shower Drain Channel Sizes:


- 100mm

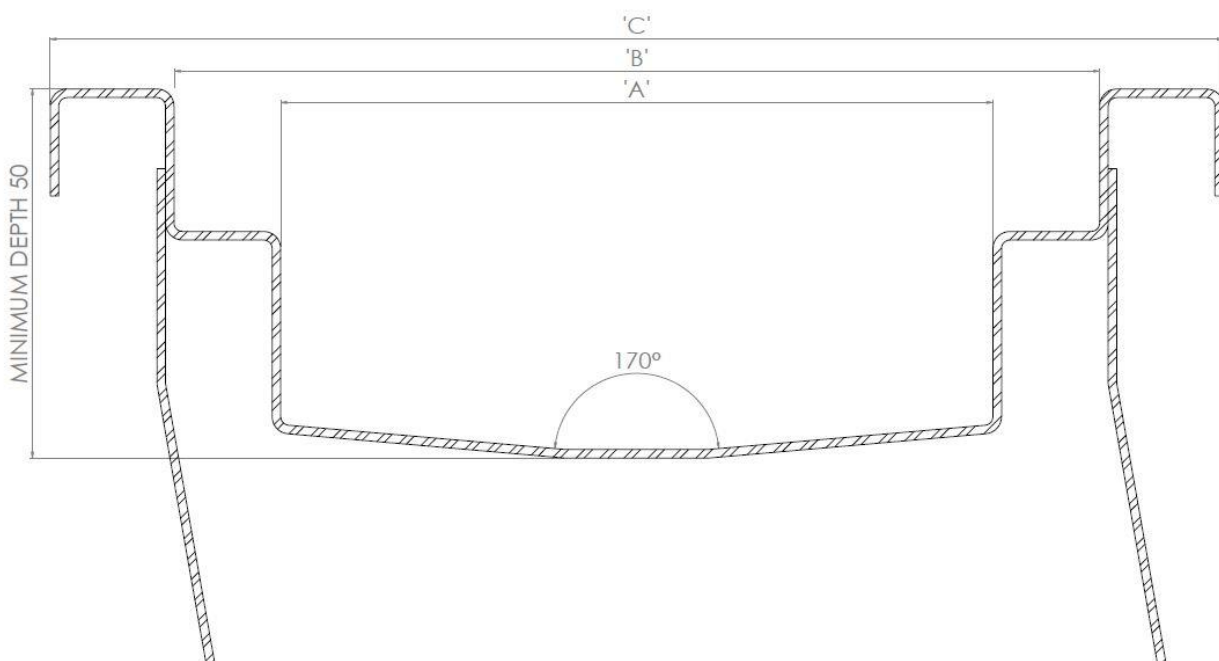
Technical Data:

- 1.2mm thick Stainless Steel
- Cell bars welded at 1-meter intervals
- Sand Blast Finish
- Supplied in 3-meter lengths
- Available in 1 width



Shower Drain Channels LS-SDC are designed for use with our Drain covers, Drain Outlets, Drain Gullies and Rodding Eyes.

Product	SKU	A	B	C	Cut Out Dims Width	Cut Out Dims Depth	Min Fall	Load Class
Shower Drain Channel 100mm	LS-SDC-100	100	150	208	410	Channel Depth + 100mm	1:150	



LSengineering

concept | design | manufacture | install

ADVECTO.CO.UK

SPECIALISTS IN HYGIENIC STAINLESS STEEL EQUIPMENT

