

### Diamond End Bottom Drain Outlet

Introducing our Diamond End Bottom Drain Outlet suitable for all industries. Manufactured from 304 or 316 Grade Stainless Steel these drain outlets are fully welded and manufactured in standard sizes and positioned along the length of a drain channel in a central position or at the end of the drain channel, equipped with rodding eye access.

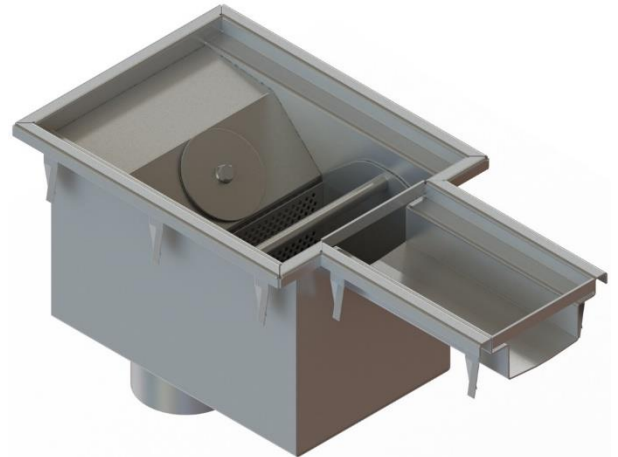
End Bottom Drain Outlet are suitable for hygienic environments for heavy load traffic and the design provides maximum drainage of water to the channel below, providing a robust surface.

The Diamond Outlets are available in the following sizes:




- 2 Outlet Pipe Sizes: Ø110mm and Ø160mm
- 2 Channel Width Sizes: 100mm and 170mm

Diamond End Bottom Drain Outlet Spec:

- Body Material Thickness: 2mm
- 1 removable basket for waste
- 50mm Water Trap
- O/D. 4"/ 6" OUTLET TUBE



Diamond Central Bottom Drain Outlet LS-DEBO designed for use with our drainage channel LS-DC-100.

Product	SKU	A	B	C	D	Load Class
100 Channel 110Ø Outlet	LS-DEBO- 100-110	100	208	4" SCH 5S OUTLET	188.5	
100 Channel 160Ø Outlet	LS-DEBO- 100-160	100	208	6" SCH 5S OUTLET	188.5	
170 Channel 110Ø Outlet	LS-DEBO- 170-110	170	278	4" SCH 5S OUTLET	188.5	
170 Channel 160Ø Outlet	LS-DEBO- 170-160	170	278	6" SCH 5S OUTLET	188.5	